

PROJECT TITLE

CITY OF RICHMOND
GRTC BUS SHELTER
PROTOTYPE

CONSULTANTS

STRUCTURAL ENGINEER
McGINNEY & CO.
100 SOUTH RAILROAD AVENUE
ASHLAND, VIRGINIA 23005
(804) 798-1431
(804) 798-7072 (FAX)

SEA

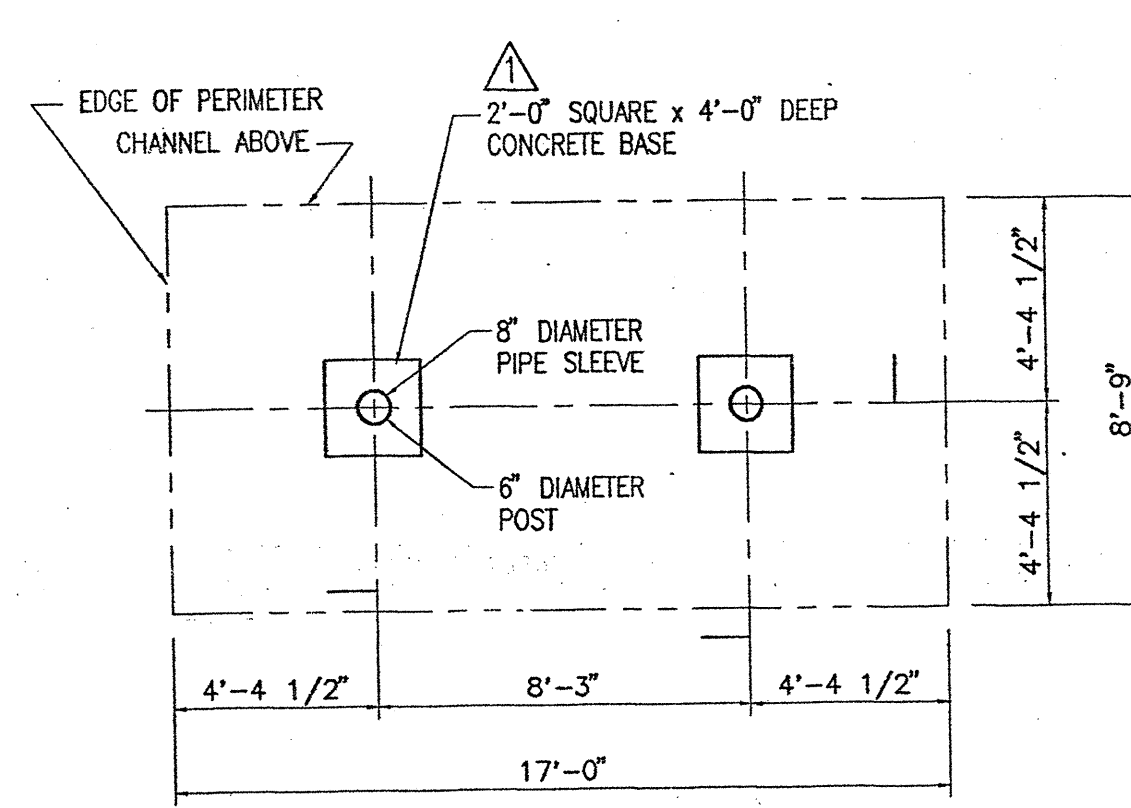
PROJECT NO. 9509
DRAWN BY LBA
CHECKED BY WDJ
DATE MAY 8, 1996
REVISIONS
▲ MAY 30, 1996 GENERAL REVISIONS

▲ JANUARY 15, 1997 GENERAL REVISIONS

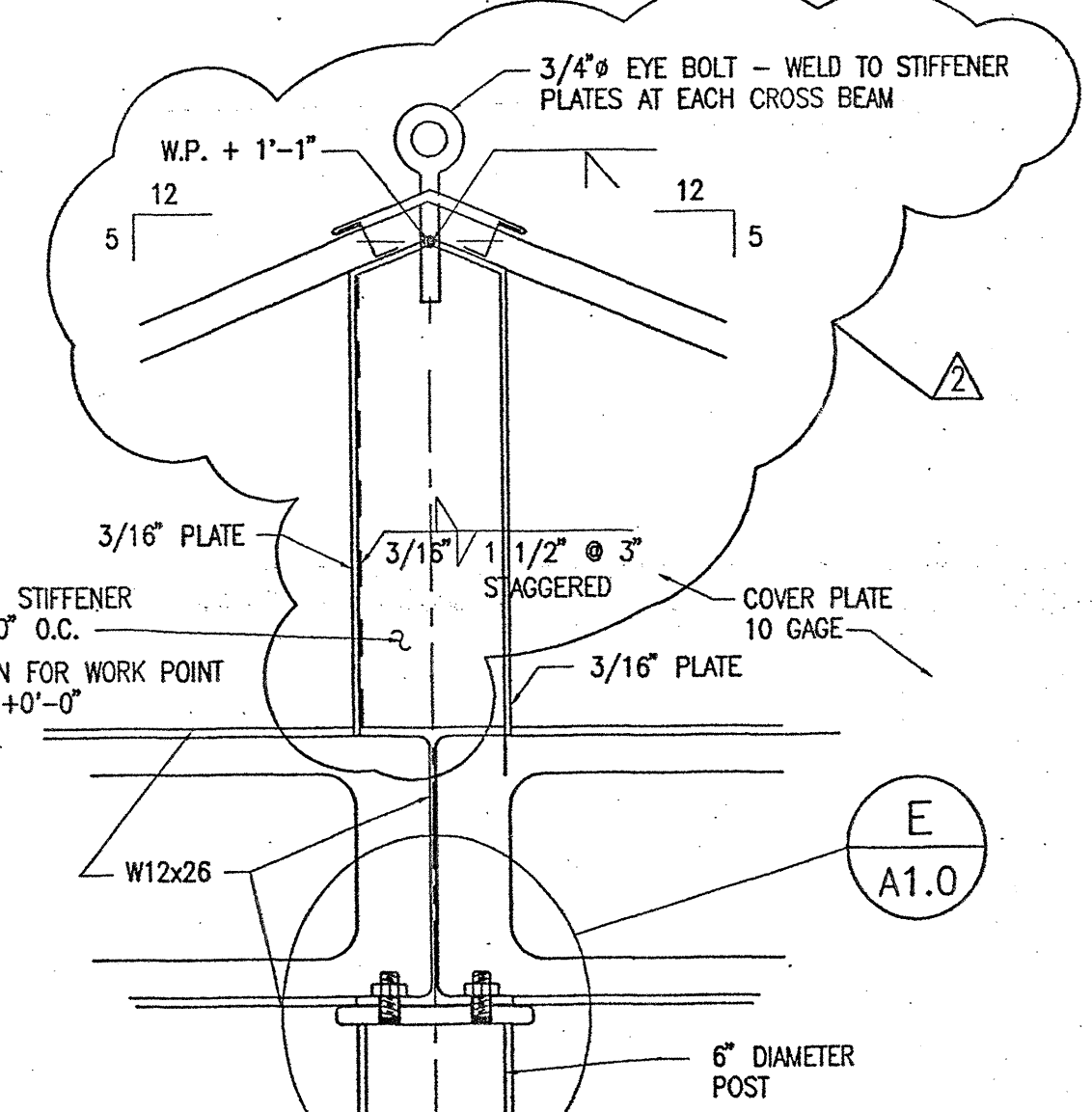
SHEET TITLE

PLANS
SECTIONS
DETAILS
GENERAL NOTES

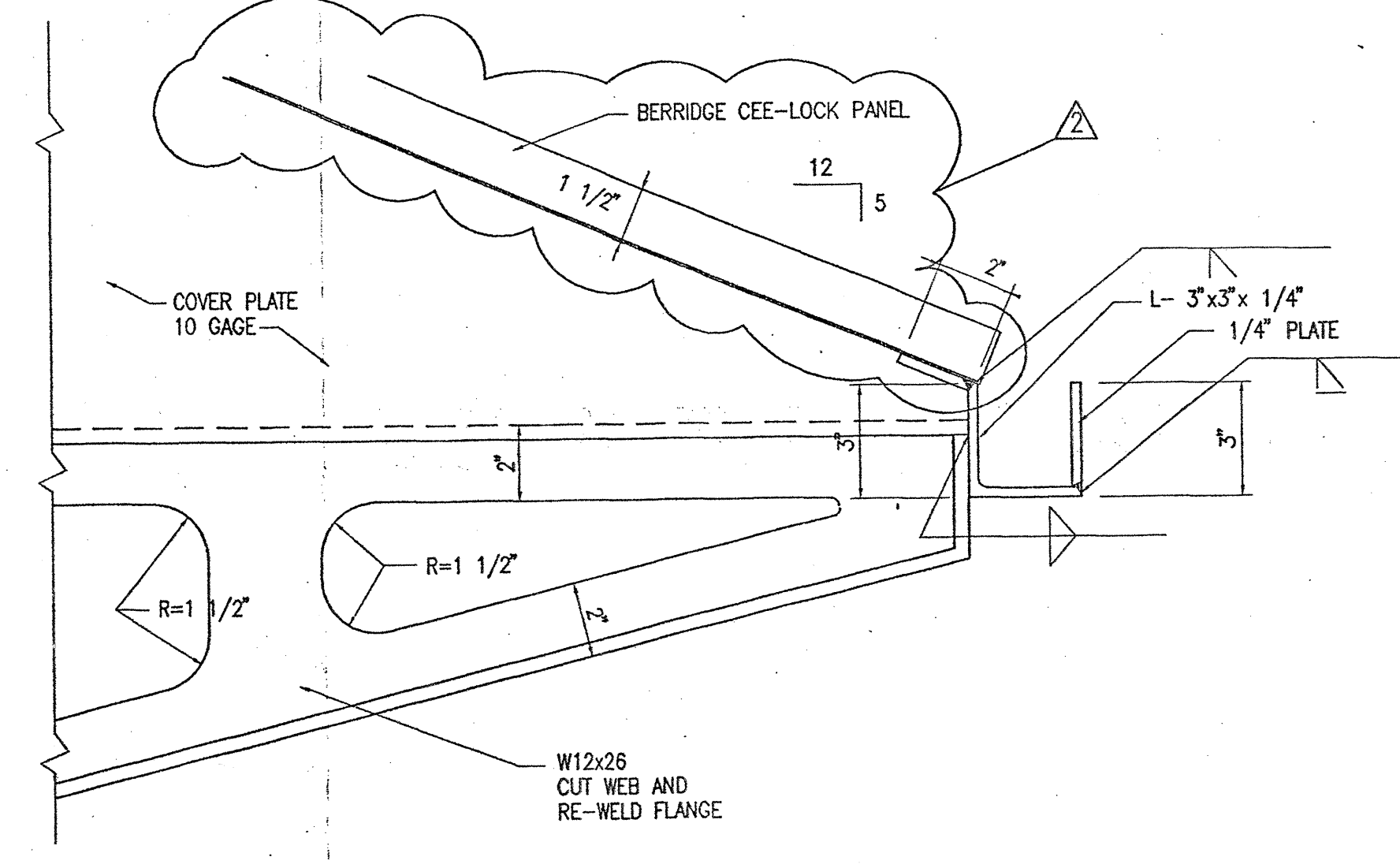
A1.0



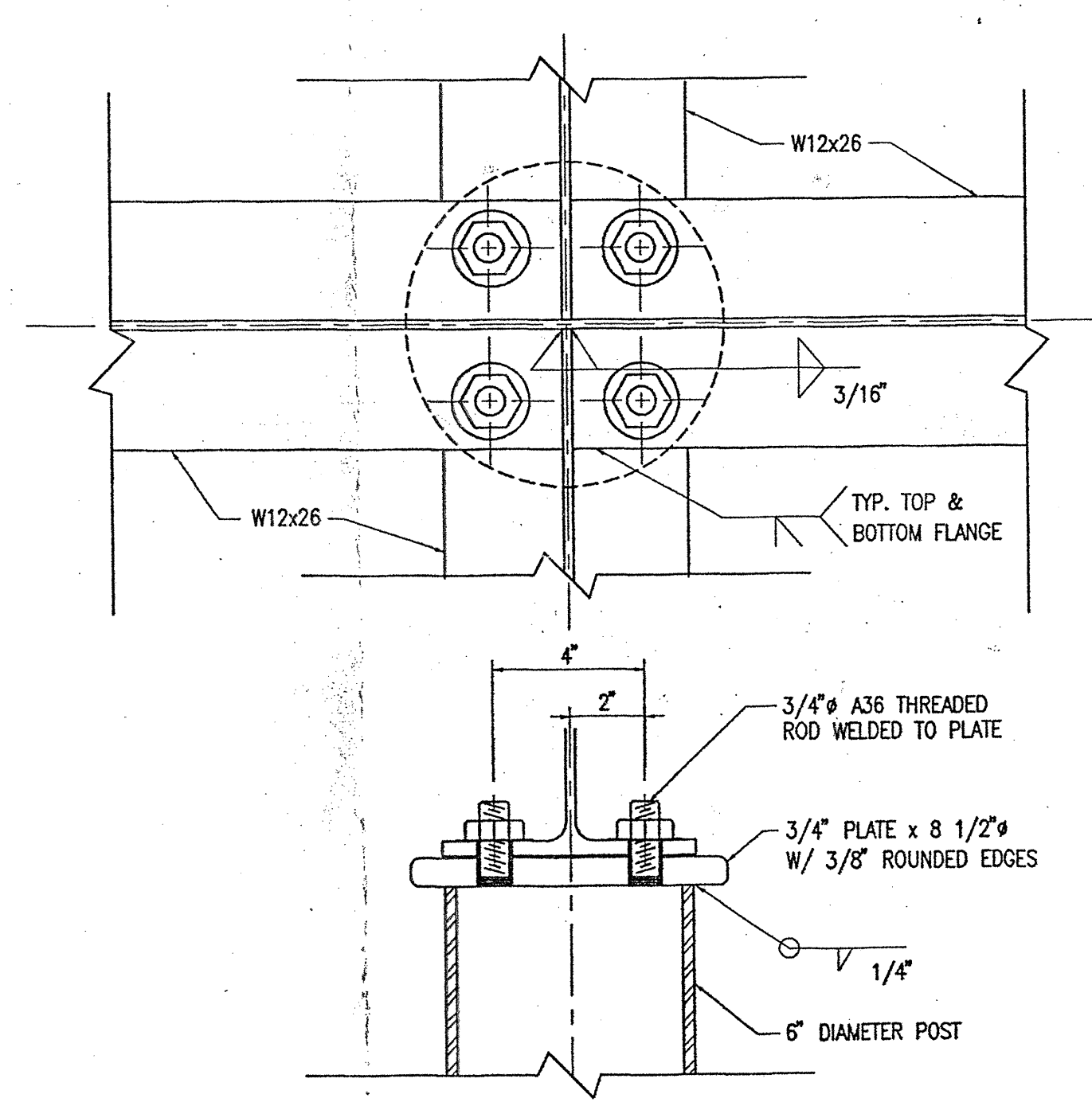
FOUNDATION PLAN
1/4"=1'-0"



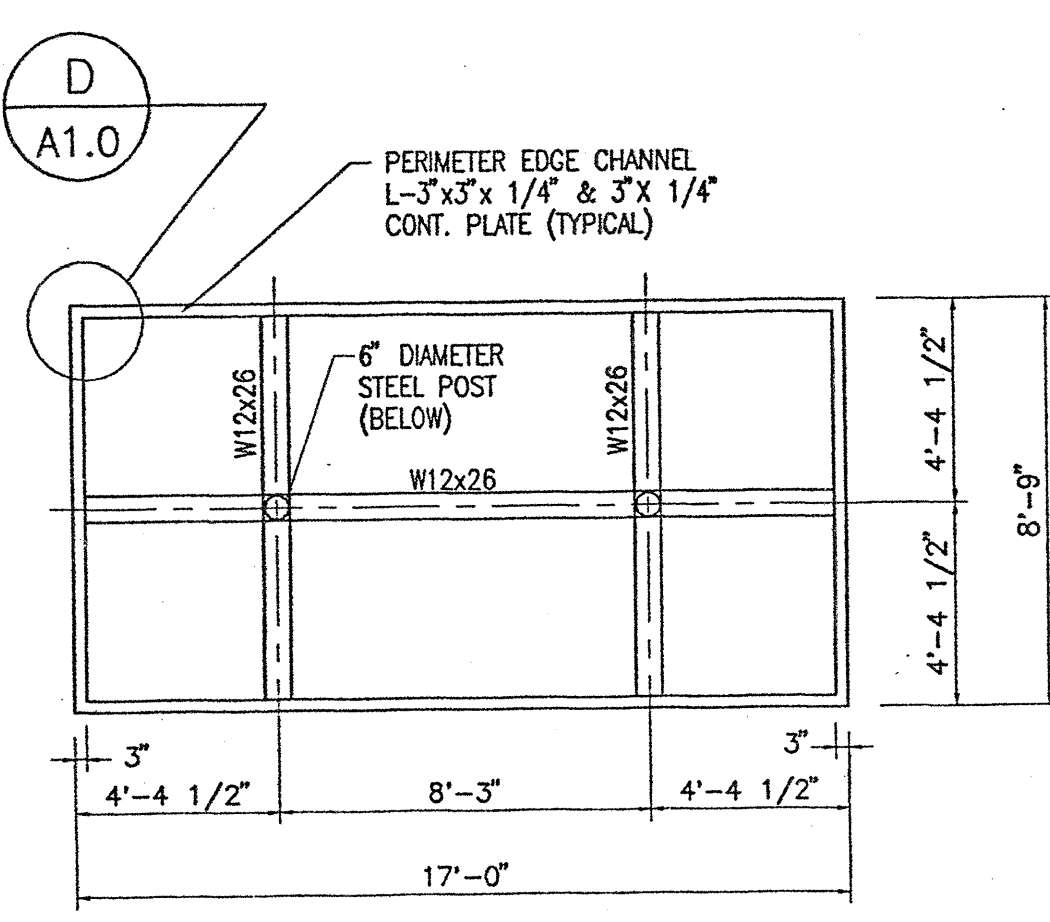
DETAIL A
1 1/2"=1'-0"



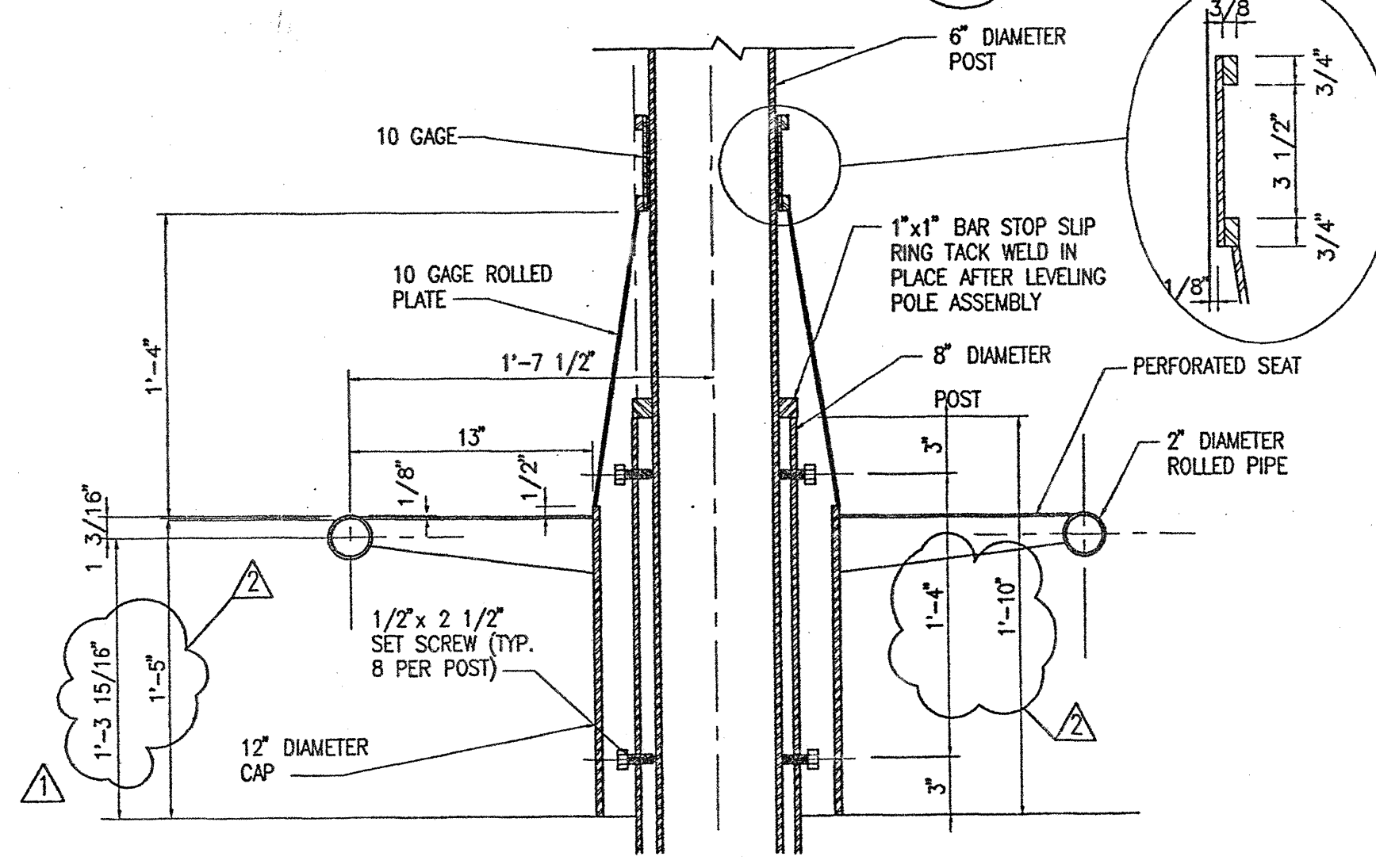
DETAIL C
3"=1'-0"



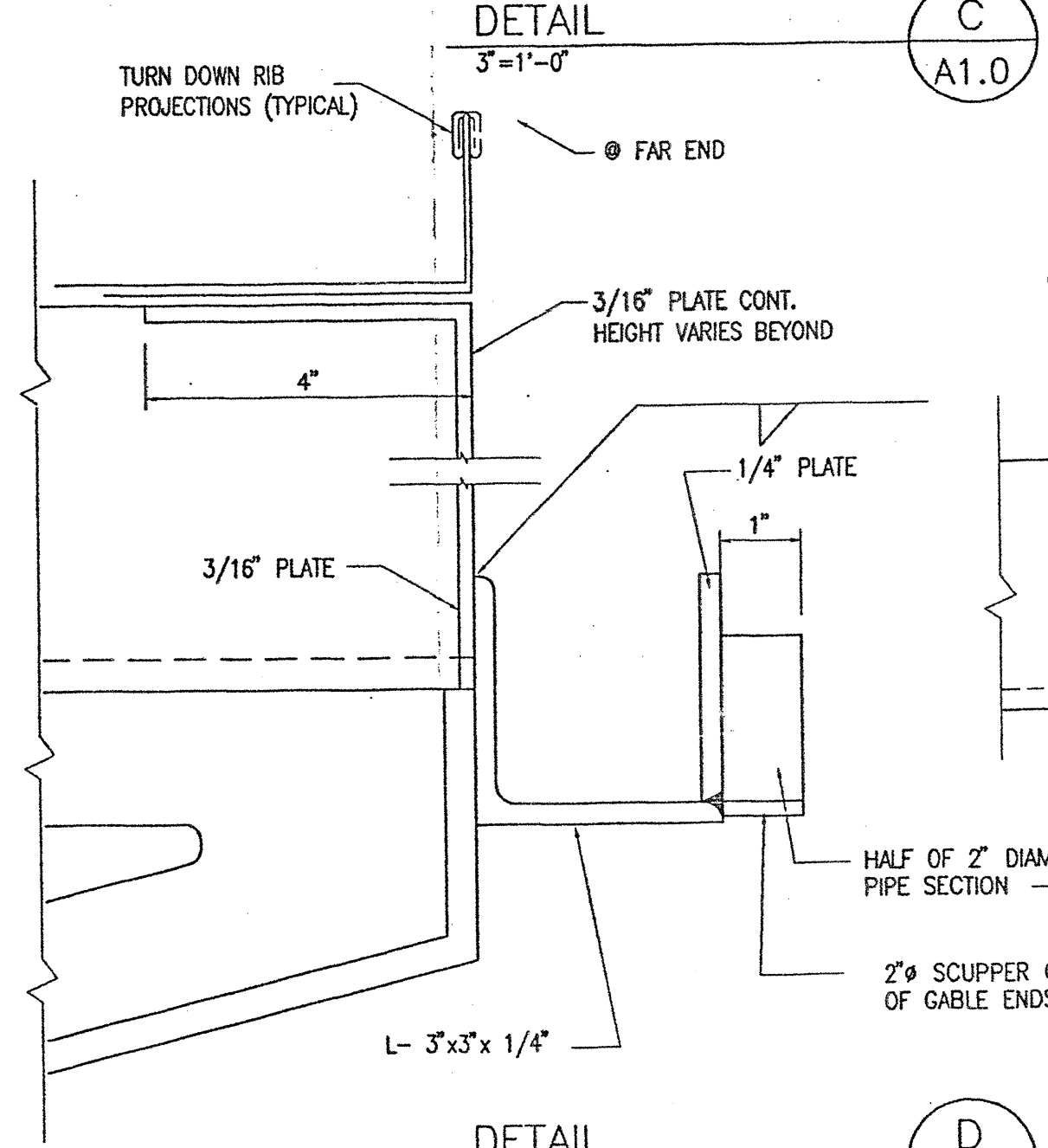
DETAIL E
3"=1'-0"



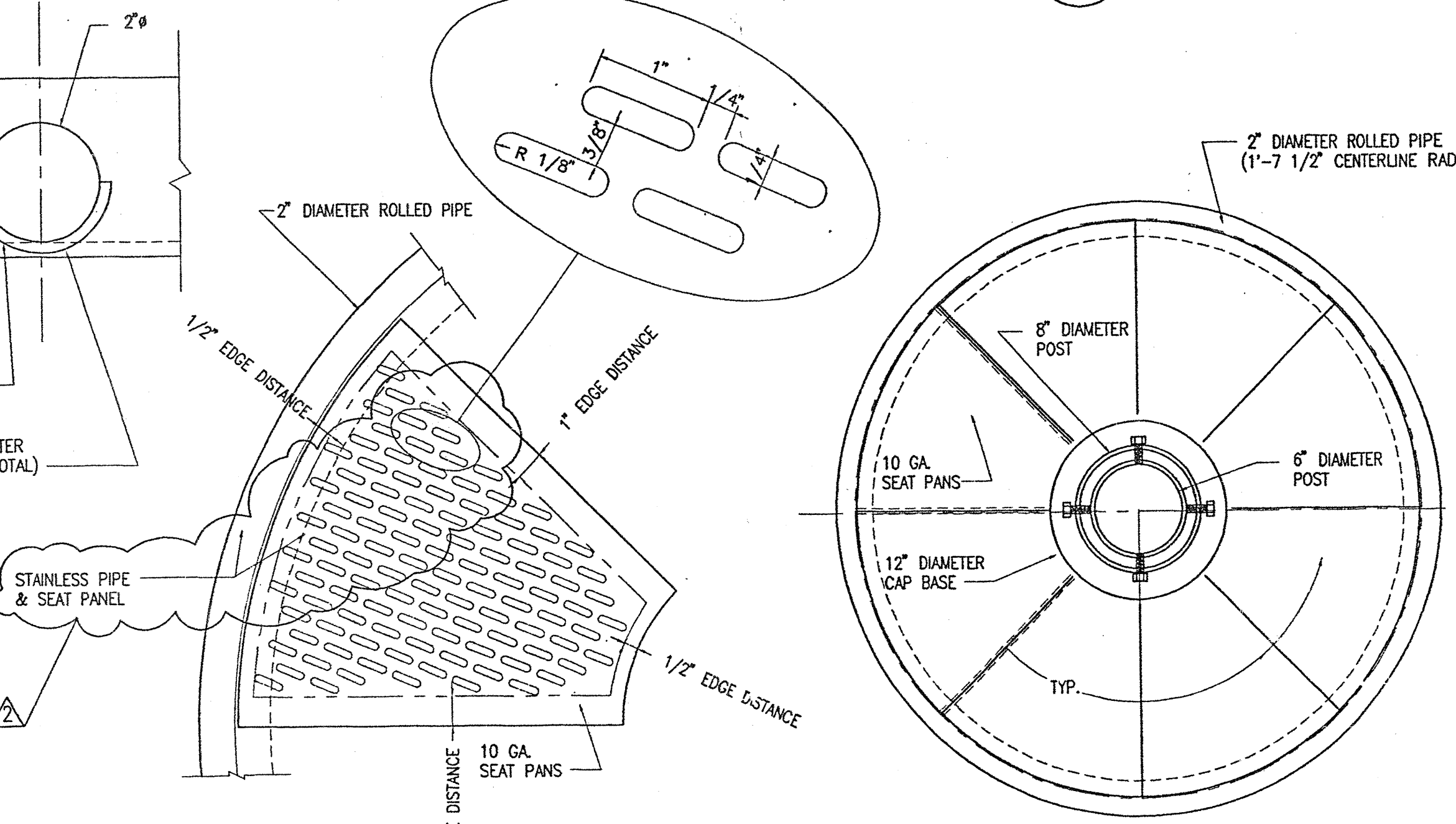
ROOF FRAMING PLAN
1/4"=1'-0"



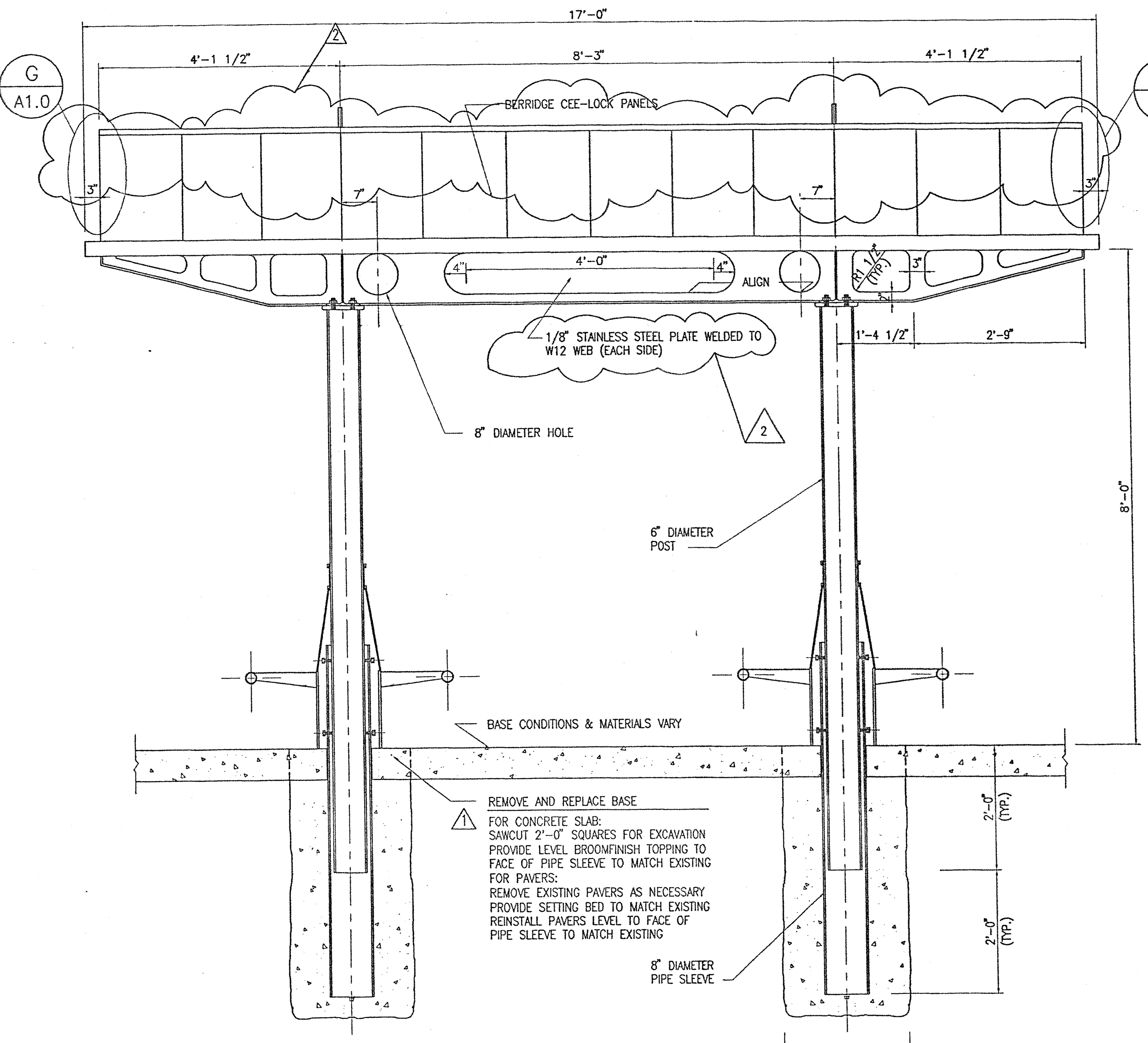
DETAIL B
1 1/2"=1'-0"



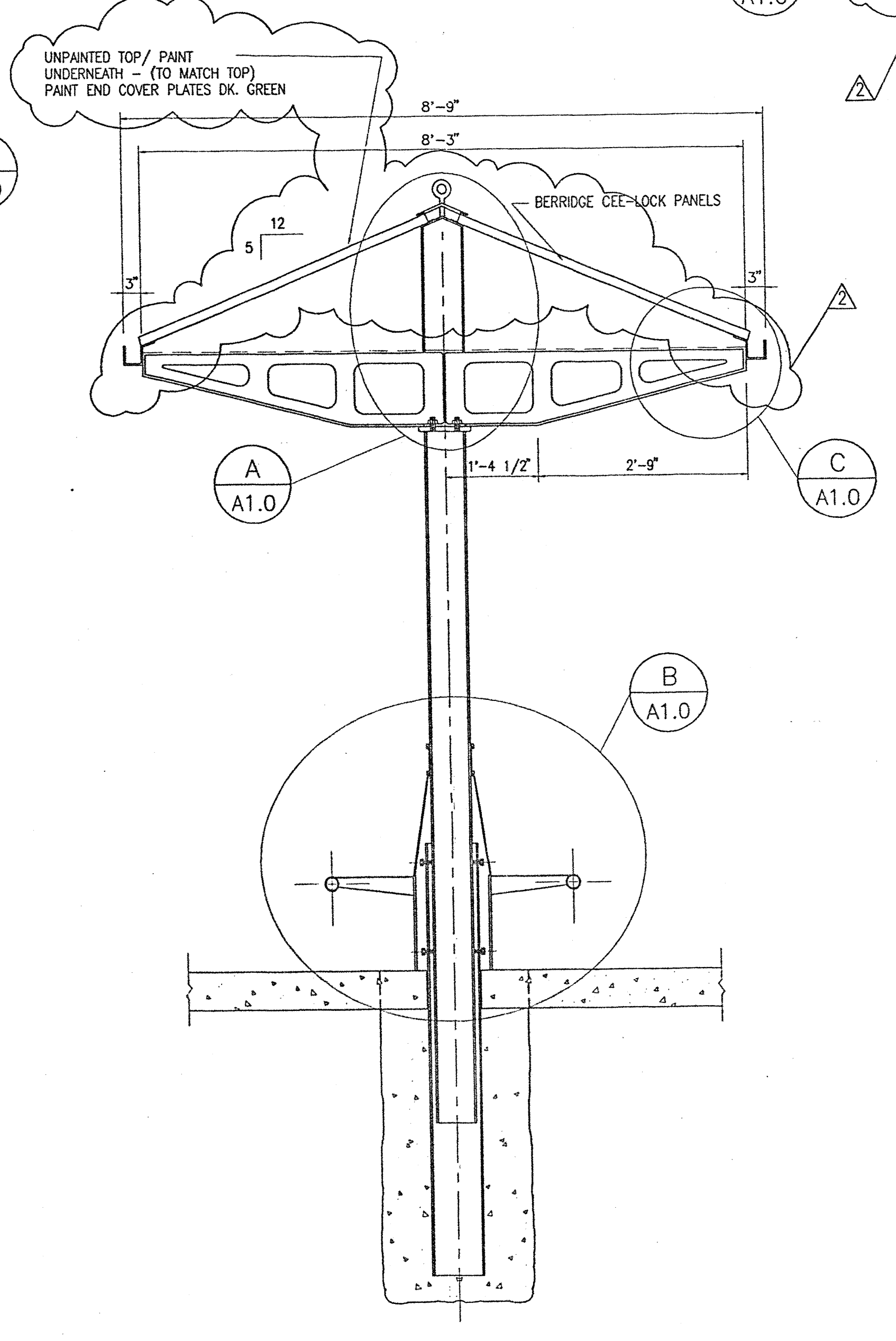
DETAIL D
HALF SCALE



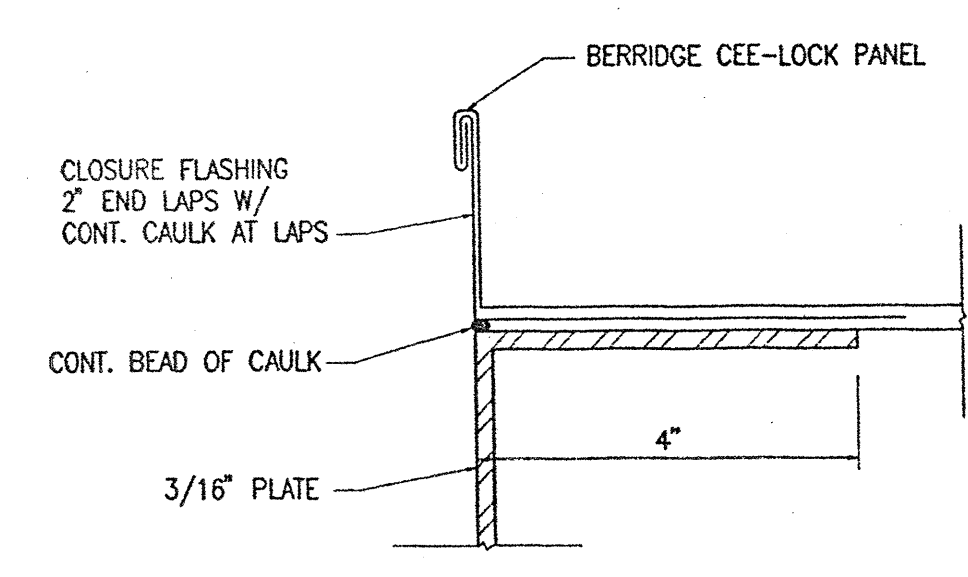
DETAIL F
1 1/2"=1'-0"



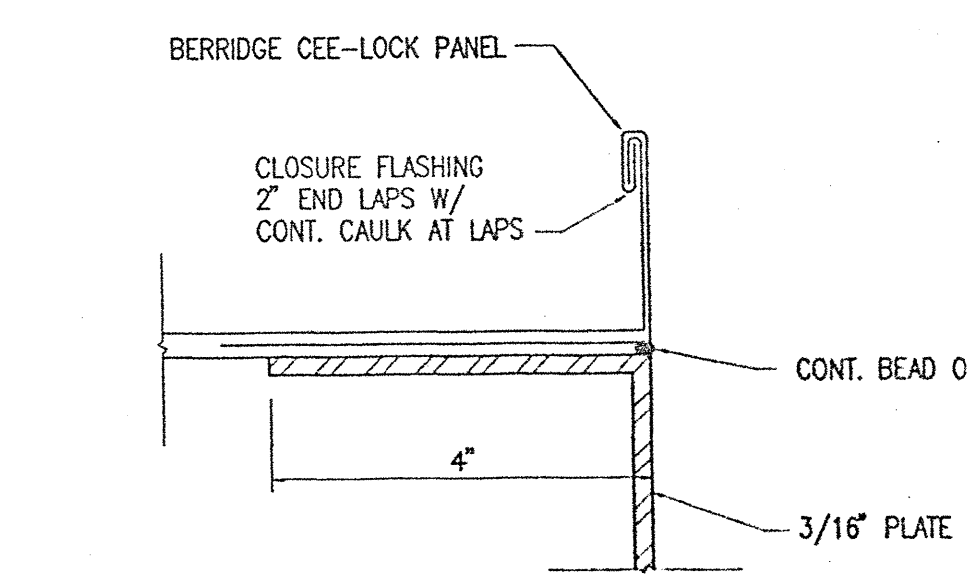
SECTION 1
3/4"=1'-0"



SECTION 2
3/4"=1'-0"



DETAIL G
HALF SCALE



DETAIL H
HALF SCALE

GENERAL NOTES / SPECIFICATIONS:

BUILDING CODE: ALL NEW CONSTRUCTION SHALL CONFORM TO THE VIRGINIA UNIFORM STATEWIDE BUILDING CODE, 1993 EDITION.
DESIGN LIVE LOADS:
ROOF: 20 PSF
SNOW: P_s= 20 PSF, C_e= .7, I=1.0
WIND: 75 MPH, EXP. "C", I=1.0
FOUNDATIONS: FOUNDATIONS HAVE BEEN DESIGNED BASED ON AN ASSUMED SOIL BEARING PRESSURE OF 2000 POUNDS PER SQUARE FOOT.
CONCRETE: CONCRETE WORK SHALL CONFORM TO ACI 318-89 (REVISED 1992). CEMENT: PORTLAND CEMENT, TYPE I, ASTM C150. AGGREGATE: ASTM C33. WATER SHALL BE POTABLE. CONCRETE SHALL BE NORMAL WEIGHT AND DEVELOP A MINIMUM COMPRESSIVE STRENGTH OF 3500 PSI AT 28 DAYS.
CONCRETE EXPOSED TO WEATHER SHALL BE AIR-ENTRAINED. CALCIUM CHLORIDE ADMIXTURES CONTAINING CALCIUM CHLORIDE OR WHICH INCREASE THE POTENTIAL FOR CORROSION OF EMBEDDED METAL ITEMS SHALL NOT BE USED.
STRUCTURAL STEEL:
HOT-ROLLED STRUCTURAL STEEL SHAPES, PLATES AND BARS: ASTM A36
STEEL PIPE: ASTM A501 OR ASTM A53, TYPE E OR S, GRADE B.
BOLTS AND ANCHOR BOLTS:
BOLTS FOR CAP CONNECTION TO BE A36 THREADED ROD.
BOLTS FOR POST CONNECTION TO BE ASTM A307.
PAINTING: ALL METAL SURFACES (EXCEPT ROOFING PANELS) SHALL RECEIVE ONE PRIME COAT OF DUPONT 25 P EPOXY MASTIC PRIMER AND ONE FINISH COAT OF DUPONT IRON 326. PREPARATION OF SURFACES AND APPLICATION OF COATINGS IS TO BE IN ACCORDANCE WITH THE MANUFACTURERS RECOMMENDATIONS. PAINTED SURFACES DAMAGED BY HANDLING OR WELDING SHALL BE TOUCHED UP IN THE FIELD. COLOR TO MATCH O'BRIEN JFFG-509-58 BLACK GREEN.
SUBMITTALS: SUBMIT SHOP DRAWINGS FOR REVIEW AND APPROVAL BY THE ENGINEER.
WELDING: WELDING SHALL BE IN ACCORDANCE WITH AWS D1.1 AND BE PERFORMED BY WELDERS CERTIFIED IN ACCORDANCE WITH AWS PROCEDURES. WELDING ELECTRODES SHALL CONFORM TO ASTM A233, E70 SERIES, MANUAL SHIELDED METAL-ARC PROCESS.
ROOF PANELS: ROOF PANELS ARE TO BE BERRIDGE CEE-LOCK STANDING SEAM ROOF PANELS WITH CONTINUOUS CEE-RIB. MATERIAL IS TO BE SATIN FINISH GALVALUME, 24 GA. ASTM 792-86.
SEAT PANS: SEAT PANS ARE TO BE 10 GA. PUNCHED TO THE PATTERN SHOWN. PANS ARE TO BE FORMED AND WELDED TO THE 2" PIPE BASE AND TO THE 2" DIAMETER PIPE SEAT RING.