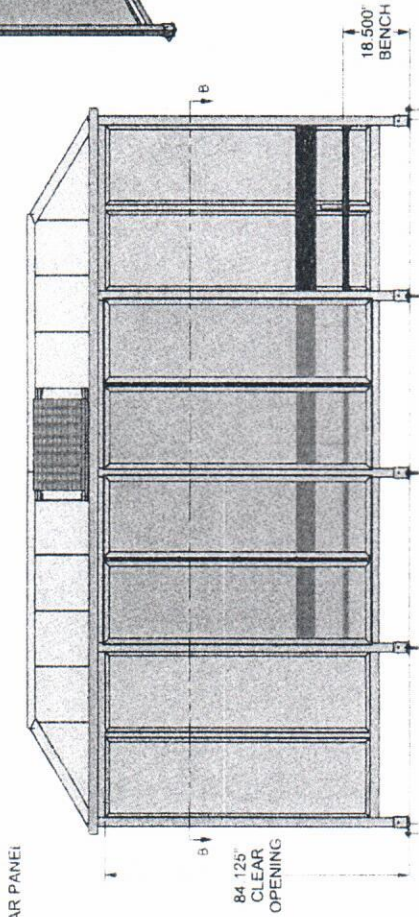
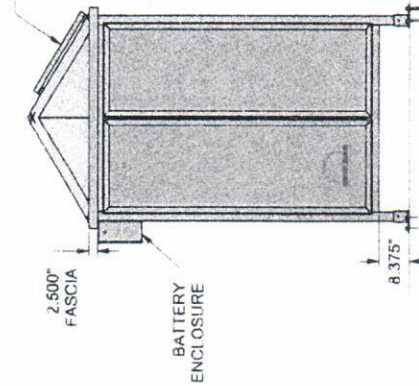


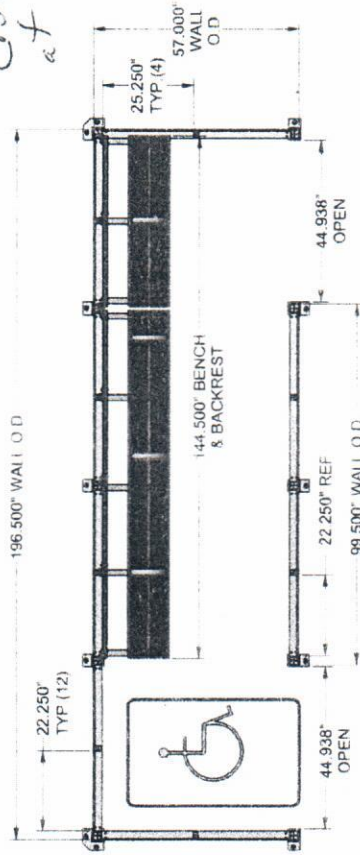
(1) Unit to be installed at Hill Street



FRONT ELEVATION



SIDE ELEVATION



SECTION B-B

THIS DRAWING IS CONFIDENTIAL AND IS FOR THE SOLE USE OF OUR CUSTOMERS AND MAY NOT BE REPRODUCED OR COPIED WITHOUT WRITTEN PERMISSION FROM BRASCO INTERNATIONAL. LEAD TIME BEGINS UPON RECEIPT OF SIGNED APPROVAL.

PROJECT	HAUS	BOH
DATE	5-29-18	5-29-18
ISSUE	002	A
DESCRIPTION	SLIMLINE STYLE TRANSIT SHELTER	
ITEM NO.	SL-05-16-WC-F14-CC-SSHIP	

BRASCO INTERNATIONAL, INC.
 27400 130th Street, OK
 9300 SW 14th Ave, OK 73154
 405.897.3661 www.brasco.com



QUANTITY (1) SHELTER THUS

- SPECIFICATIONS:
- RAL9017 TRAFFIC BLACK POWDER COATED ALUMINUM STRUCTURE
 - 1/4" CLEAR ACRYLIC WALL GLAZING
 - 12' LONG ALUMINUM BENCH WITH BLACK HDPE SLATS AND (4) ARMRESTS
 - MATTE BLACK STANDING SEAM HIP ROOF WITH GUTTER/FASCIA SYSTEM
 - ROOF MOUNTED SOLAR LIGHTING PACKAGE WITH L.E.D. LIGHT AND BATTERY ENCLOSURE