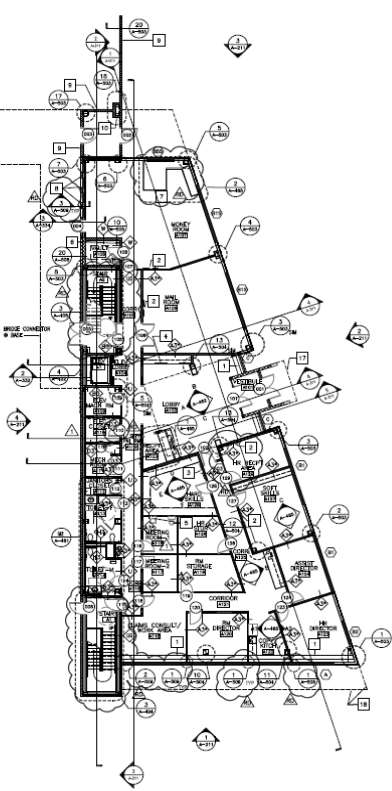
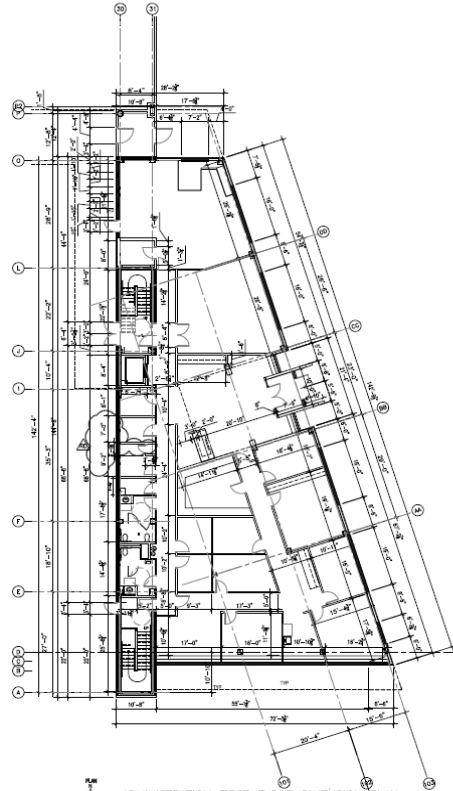


# Attachment 1 Interior Painting Floor Plans

- ADMINISTRATION BUILDING KEY NOTES:**
- 1. MAKE EDGE OF FLOOR SLAB
  - 2. ROOF BOARD: SEE SPEC. MOIST & 1/4" AFF
  - 3. ROOF DRAIN: SEE SPEC. MOIST & 3/4" AFF
  - 4. ROOF DRAIN: SEE SPEC. MOIST & 3/4" AFF
  - 5. ROOF DRAIN: SEE SPEC. MOIST & 3/4" AFF
  - 6. ROOF DRAIN: SEE SPEC. MOIST & 3/4" AFF
  - 7. ROOF DRAIN: SEE SPEC. MOIST & 3/4" AFF
  - 8. ROOF DRAIN: SEE SPEC. MOIST & 3/4" AFF
  - 9. ROOF DRAIN: SEE SPEC. MOIST & 3/4" AFF
  - 10. ROOF DRAIN: SEE SPEC. MOIST & 3/4" AFF
  - 11. ROOF DRAIN: SEE SPEC. MOIST & 3/4" AFF
  - 12. ROOF DRAIN: SEE SPEC. MOIST & 3/4" AFF
  - 13. ROOF DRAIN: SEE SPEC. MOIST & 3/4" AFF
  - 14. ROOF DRAIN: SEE SPEC. MOIST & 3/4" AFF
  - 15. ROOF DRAIN: SEE SPEC. MOIST & 3/4" AFF
  - 16. ROOF DRAIN: SEE SPEC. MOIST & 3/4" AFF
  - 17. ROOF DRAIN: SEE SPEC. MOIST & 3/4" AFF
  - 18. ROOF DRAIN: SEE SPEC. MOIST & 3/4" AFF
  - 19. ROOF DRAIN: SEE SPEC. MOIST & 3/4" AFF
  - 20. ROOF DRAIN: SEE SPEC. MOIST & 3/4" AFF
  - 21. ROOF DRAIN: SEE SPEC. MOIST & 3/4" AFF
  - 22. ROOF DRAIN: SEE SPEC. MOIST & 3/4" AFF
  - 23. ROOF DRAIN: SEE SPEC. MOIST & 3/4" AFF
  - 24. ROOF DRAIN: SEE SPEC. MOIST & 3/4" AFF
  - 25. ROOF DRAIN: SEE SPEC. MOIST & 3/4" AFF
  - 26. ROOF DRAIN: SEE SPEC. MOIST & 3/4" AFF
  - 27. ROOF DRAIN: SEE SPEC. MOIST & 3/4" AFF
  - 28. ROOF DRAIN: SEE SPEC. MOIST & 3/4" AFF
  - 29. ROOF DRAIN: SEE SPEC. MOIST & 3/4" AFF
  - 30. ROOF DRAIN: SEE SPEC. MOIST & 3/4" AFF
  - 31. ROOF DRAIN: SEE SPEC. MOIST & 3/4" AFF
  - 32. ROOF DRAIN: SEE SPEC. MOIST & 3/4" AFF
  - 33. ROOF DRAIN: SEE SPEC. MOIST & 3/4" AFF
  - 34. ROOF DRAIN: SEE SPEC. MOIST & 3/4" AFF
  - 35. ROOF DRAIN: SEE SPEC. MOIST & 3/4" AFF
  - 36. ROOF DRAIN: SEE SPEC. MOIST & 3/4" AFF
  - 37. ROOF DRAIN: SEE SPEC. MOIST & 3/4" AFF
  - 38. ROOF DRAIN: SEE SPEC. MOIST & 3/4" AFF
  - 39. ROOF DRAIN: SEE SPEC. MOIST & 3/4" AFF
  - 40. ROOF DRAIN: SEE SPEC. MOIST & 3/4" AFF
  - 41. ROOF DRAIN: SEE SPEC. MOIST & 3/4" AFF
  - 42. ROOF DRAIN: SEE SPEC. MOIST & 3/4" AFF
  - 43. ROOF DRAIN: SEE SPEC. MOIST & 3/4" AFF
  - 44. ROOF DRAIN: SEE SPEC. MOIST & 3/4" AFF
  - 45. ROOF DRAIN: SEE SPEC. MOIST & 3/4" AFF
  - 46. ROOF DRAIN: SEE SPEC. MOIST & 3/4" AFF
  - 47. ROOF DRAIN: SEE SPEC. MOIST & 3/4" AFF
  - 48. ROOF DRAIN: SEE SPEC. MOIST & 3/4" AFF
  - 49. ROOF DRAIN: SEE SPEC. MOIST & 3/4" AFF
  - 50. ROOF DRAIN: SEE SPEC. MOIST & 3/4" AFF
  - 51. ROOF DRAIN: SEE SPEC. MOIST & 3/4" AFF
  - 52. ROOF DRAIN: SEE SPEC. MOIST & 3/4" AFF
  - 53. ROOF DRAIN: SEE SPEC. MOIST & 3/4" AFF
  - 54. ROOF DRAIN: SEE SPEC. MOIST & 3/4" AFF
  - 55. ROOF DRAIN: SEE SPEC. MOIST & 3/4" AFF
  - 56. ROOF DRAIN: SEE SPEC. MOIST & 3/4" AFF
  - 57. ROOF DRAIN: SEE SPEC. MOIST & 3/4" AFF
  - 58. ROOF DRAIN: SEE SPEC. MOIST & 3/4" AFF
  - 59. ROOF DRAIN: SEE SPEC. MOIST & 3/4" AFF
  - 60. ROOF DRAIN: SEE SPEC. MOIST & 3/4" AFF
  - 61. ROOF DRAIN: SEE SPEC. MOIST & 3/4" AFF
  - 62. ROOF DRAIN: SEE SPEC. MOIST & 3/4" AFF
  - 63. ROOF DRAIN: SEE SPEC. MOIST & 3/4" AFF
  - 64. ROOF DRAIN: SEE SPEC. MOIST & 3/4" AFF
  - 65. ROOF DRAIN: SEE SPEC. MOIST & 3/4" AFF
  - 66. ROOF DRAIN: SEE SPEC. MOIST & 3/4" AFF
  - 67. ROOF DRAIN: SEE SPEC. MOIST & 3/4" AFF
  - 68. ROOF DRAIN: SEE SPEC. MOIST & 3/4" AFF
  - 69. ROOF DRAIN: SEE SPEC. MOIST & 3/4" AFF
  - 70. ROOF DRAIN: SEE SPEC. MOIST & 3/4" AFF
  - 71. ROOF DRAIN: SEE SPEC. MOIST & 3/4" AFF
  - 72. ROOF DRAIN: SEE SPEC. MOIST & 3/4" AFF
  - 73. ROOF DRAIN: SEE SPEC. MOIST & 3/4" AFF
  - 74. ROOF DRAIN: SEE SPEC. MOIST & 3/4" AFF
  - 75. ROOF DRAIN: SEE SPEC. MOIST & 3/4" AFF
  - 76. ROOF DRAIN: SEE SPEC. MOIST & 3/4" AFF
  - 77. ROOF DRAIN: SEE SPEC. MOIST & 3/4" AFF
  - 78. ROOF DRAIN: SEE SPEC. MOIST & 3/4" AFF
  - 79. ROOF DRAIN: SEE SPEC. MOIST & 3/4" AFF
  - 80. ROOF DRAIN: SEE SPEC. MOIST & 3/4" AFF
  - 81. ROOF DRAIN: SEE SPEC. MOIST & 3/4" AFF
  - 82. ROOF DRAIN: SEE SPEC. MOIST & 3/4" AFF
  - 83. ROOF DRAIN: SEE SPEC. MOIST & 3/4" AFF
  - 84. ROOF DRAIN: SEE SPEC. MOIST & 3/4" AFF
  - 85. ROOF DRAIN: SEE SPEC. MOIST & 3/4" AFF
  - 86. ROOF DRAIN: SEE SPEC. MOIST & 3/4" AFF
  - 87. ROOF DRAIN: SEE SPEC. MOIST & 3/4" AFF
  - 88. ROOF DRAIN: SEE SPEC. MOIST & 3/4" AFF
  - 89. ROOF DRAIN: SEE SPEC. MOIST & 3/4" AFF
  - 90. ROOF DRAIN: SEE SPEC. MOIST & 3/4" AFF
  - 91. ROOF DRAIN: SEE SPEC. MOIST & 3/4" AFF
  - 92. ROOF DRAIN: SEE SPEC. MOIST & 3/4" AFF
  - 93. ROOF DRAIN: SEE SPEC. MOIST & 3/4" AFF
  - 94. ROOF DRAIN: SEE SPEC. MOIST & 3/4" AFF
  - 95. ROOF DRAIN: SEE SPEC. MOIST & 3/4" AFF
  - 96. ROOF DRAIN: SEE SPEC. MOIST & 3/4" AFF
  - 97. ROOF DRAIN: SEE SPEC. MOIST & 3/4" AFF
  - 98. ROOF DRAIN: SEE SPEC. MOIST & 3/4" AFF
  - 99. ROOF DRAIN: SEE SPEC. MOIST & 3/4" AFF
  - 100. ROOF DRAIN: SEE SPEC. MOIST & 3/4" AFF
- GENERAL NOTES:**
1. FIN. FLOOR IN ELEVATION IS 200.00' UNLESS NOTED OTHERWISE.
  2. SEE GENERAL NOTES FOR COORDINATES AT STAIRS AND TRAYS: UNLESS OTHERWISE INDICATED.
  3. ALL LIGHT AND HEAVY WALL FINISHES SHALL BE SECURED FASTENED TO THE STRUCTURAL STEEL FRAME.



ADMINISTRATION FIRST FLOOR ARCHITECTURAL PLAN  
SCALE 1/8" = 1'-0"



ADMINISTRATION FIRST FLOOR DIMENSION PLAN  
SCALE 1/8" = 1'-0"

**NOTE:**  
This record drawing has been prepared based on information provided by others. The Design Professional has not verified the accuracy and/or completeness of this information and assumes no responsibility for the accuracy of this record or for any errors or omissions which may be incorporated herein as a result.

**Consistent Framing**  
CONCRETE FORMWORK  
2010 WEST MAIN STREET  
FARMINGTON, VT 05475  
TEL: 802.535.1234

**VHB**  
VERMONT HOLDINGS INC.  
ARCHITECTURAL  
300 BELL STREET  
FARMINGTON, VT 05475  
TEL: 802.535.1234

**GREATER RICHMOND TRANSIT COMPANY  
NEW BUS OPERATIONS AND MAINTENANCE FACILITY  
301 BELLEVILLE BLVD  
RICHMOND, VERMONT 05476**

Project No.	100000000
Sheet No.	100000000
Scale	AS SHOWN
Date	10/10/10
Drawn	ABC
Checked	DEF
Approved	GHI

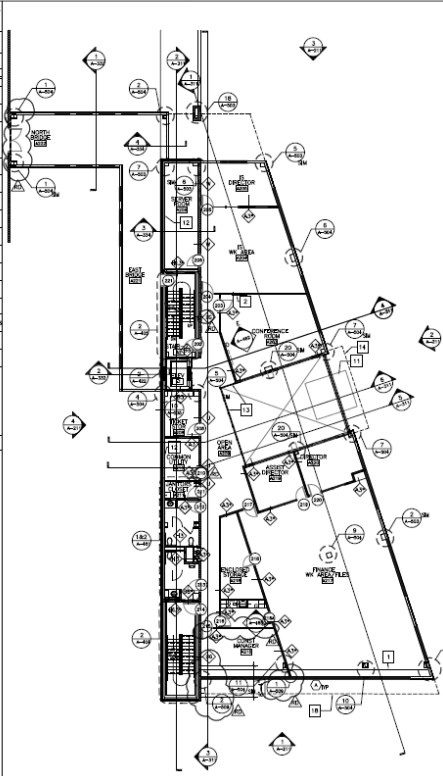
**A-161**

**ADMINISTRATION BUILDING  
KEY NOTES:**

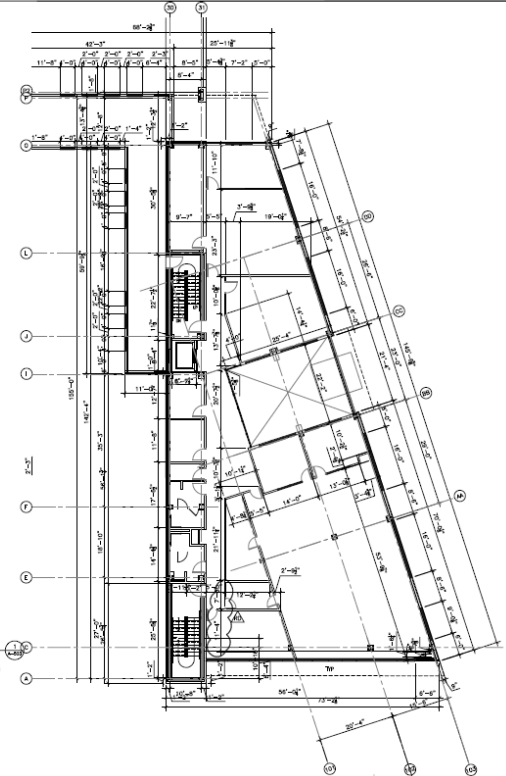
- FINISH EDGE OF PLUMB LINE
- BACK SLOPE, SEE SCHEDULE, HEIGHT # 4'-0" AFF
- OFF EDGE SLOPE, SEE SCHEDULE, HEIGHT # 3'-0" AFF
- CROWN MOLD IN REAR CHASE SEE SHEET A-500 AND SCHEDULE
- ROOM IN FOR FUTURE BRIDGE TRUCK HO
- MOUNT WALLS IN 100 A-100 SHALL BE CONSTRUCTED UP TO ONE (1) IN TO TOP OF 100 A-100. ALL CORNER PLUMB SHALL BE WITHIN AND 1/8" TYP. TOLERANCE. SEE PLAN SECTION FROM ELEVATION TO VERIFY THE FINISH ELEVATION.
- MAKE UP PLACE NEAR ENTRY WALL
- SET A 30" OPENING IN 100 A-100 AFF TO SYSTEM OF JOIST TO RECEIVE TRANS-WALL EXTERIOR WALL
- IF NEW WINDOW EXTERIOR, SEE SCHEDULE ON SHEET A-500
- MAKE WALL - SEE SCHEDULE TO SHEET A-500
- VESTIBULE CANTY BEAM
- 1/2" ALUMINUM CORNER ONE (1) X 1" FINISH
- METAL & GLASS CORNER/EDGE TRIM
- BROWN DOWN ROOF OVERHANG MISC.
- 30" TYP. FABRIC CANOPY
- FORMER COATED MISC. - SEE SCHEDULE TO SHEET A-500
- OVERHANG OF ENTRY CANTY MISC.
- EXIST OF EXIST WALL MISC.

**GENERAL NOTES:**

1. THE FLOOR IS ELEVATION IS 222.47' UNLESS NOTED OTHERWISE.
2. SEE CHASER PLANS FOR COLUMN CONCENTRIC AT BEAMS AND TRUSS SPACERS CONCENTRIC BEAMS.
3. ALL LEAD PAINT AND LEAD PAINTING SHALL BE REMOVED ACCORDING TO THE STRUCTURAL STEEL PLAN.



**ADMINISTRATION SECOND FLOOR ARCHITECTURAL PLAN**  
SCALE: 1/8" = 1'-0"



**ADMINISTRATION SECOND FLOOR DIMENSION PLAN**  
SCALE: 1/8" = 1'-0"

**NOTE:**  
This record drawing has been prepared based on information provided by others. The Design Professional has not verified the accuracy and/or completeness of this information and assumes no responsibility for the accuracy of this record or for any errors or omissions which may be incorporated herein as a result.

Comcast Flooring  
10000 W. BRIDGEWAY  
DALLAS, TX 75243  
TEL: 972.412.1234

VHB  
VIRGINIA HARBOR BUILDERS  
10000 W. BRIDGEWAY  
DALLAS, TX 75243  
TEL: 972.412.1234

GREATER RICHMOND TRANSIT COMPANY  
NEW BUS OPERATIONS AND MAINTENANCE FACILITY  
3011 W. BRIDGEWAY  
RICHMOND, VIRGINIA 23218

ARCHITECTURAL & DIMENSION  
3011 W. BRIDGEWAY  
RICHMOND, VIRGINIA 23218

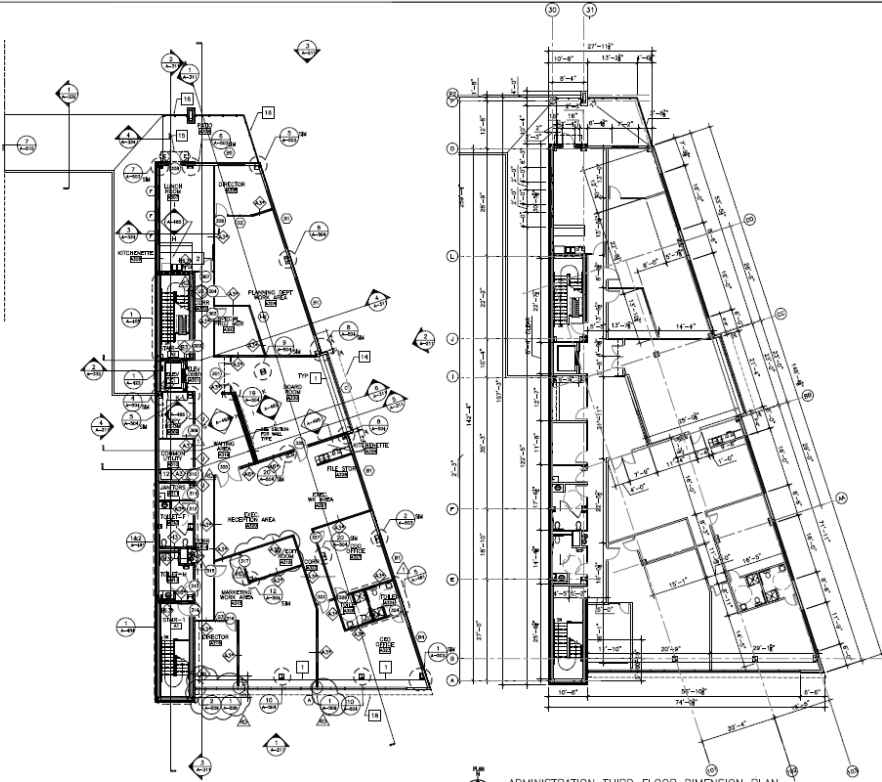
DRAWING NO. \_\_\_\_\_  
DATE \_\_\_\_\_  
SCALE \_\_\_\_\_  
SHEET NO. \_\_\_\_\_

**ADMINISTRATION BUILDING KEY NOTES:**

- WORK SIDE OF FLOOR SLAB
- SINK BASINS SEE SPEC. HEIGHT @ 4'-0" AFF
- DRY COINCH SINKS SEE SPEC. HEIGHT @ 3'-0" AFF
- CUSTOM WALK IN REFRIG. CASE SEE SHEET A-100 FOR DETAILS
- HOLDUP IN FOR FUTURE TRUCK TRAILER
- WALK WELLS IN FOR 18" DIA. WELLS TO BE CONCRETE 18" DIA. - 18" DEEP WITH 1/2" DIA. WELLS. ALL COVERS PLACED UNDER WELLS AND UP STEEL. REPAIR WITH 1/2" DIA. WELLS FROM 18" DIA. WELLS TO WELLS. WELLS WITH WELLS.
- BUILD IN PLACE HEAVY DUTY TABLE
- 18" x 24" OPERING IN 18" AFF. TO BOTTOM OF OPERING TO RECEIVE MECHANICAL EQUIPMENT WALK
- IF HIGH MACHINERY OVERHANGS, SEE DETAIL ON SHEET A-100.
- GLASS WALL - SEE DETAIL IN SHEET A-100.
- VESTIBULE CANTILEY WALK
- 1/2" FLOORING UNDER 1" AFF. FLOORING
- WALK & GLASS OVERHANGING WALK
- SINKS FROM ROOF OVERHANGING WALK
- 30" DIA. FLOORING WALK
- FLOORING COVERED WALKING - SEE DETAIL & SHEET A-100.
- OVERHANGS OF ENTRY CANTILEY WALK
- DETAIL OF GLASS WALL WALK

**GENERAL NOTES:**

1. FIN. FLOOR ELEVATION IS 228.07' UNLESS NOTED OTHERWISE.
2. SEE FINISHING PLANS FOR COLUMN CONCERNING AT STAIRWAYS AND TOILETS UNLESS OTHERWISE INDICATED.
3. ALL LIGHT GROUND WORK SHALL BE SECURELY FASTENED TO THE STRUCTURAL STEEL FRAME.



ADMINISTRATION THIRD FLOOR ARCHITECTURAL PLAN  
SCALE: 1/8" = 1'-0"

ADMINISTRATION THIRD FLOOR DIMENSION PLAN  
SCALE: 1/8" = 1'-0"

**NOTE:**  
This record drawing has been prepared based on information provided by others. The design professional has not verified the accuracy and/or completeness of this information and assumes no responsibility for the accuracy of this record or for any errors or omissions which may be incorporated herein as a result.

**Committ Planning**  
ARCHITECTURAL & ENGINEERING  
301 BELT BOULEVARD @ LORDELY JANE  
RICHMOND, VIRGINIA 23218

**VHB**  
VERIFICATION & HOLDING BACK  
301 BELT BOULEVARD @ LORDELY JANE  
RICHMOND, VIRGINIA 23218

**GREENE RICHMOND TRANSIT COMPANY**  
NEW BUS OPERATIONS AND MAINTENANCE FACILITY  
301 BELT BOULEVARD @ LORDELY JANE  
RICHMOND, VIRGINIA 23218

Project No. 2007  
Sheet No. 163  
Date: 08/18/07

ARCHITECTURAL & ENGINEERING  
THIRD FL PLANS  
A-163