

# Attention Customers!

## Bus Stop Construction

*New concrete landing pads are being built at select stops on Southside.*

**WHEN:** July 20-21, 2021.

**WHAT:** GRTC is constructing new concrete landing pads at the following bus stops on Southside to improve access for passengers according to the Americans with Disabilities Act. These landing pads provide a stable and smooth surface for passengers to board and alight, including using the bus ramp that can deploy levelly onto the pad.

**IMPACT:** These bus stops are temporarily closed during construction, with temporary alternate bus stops open nearby.

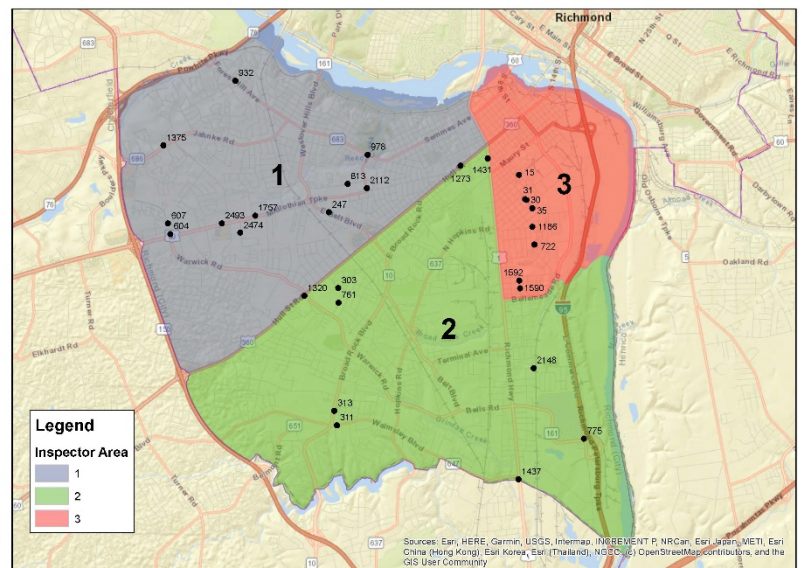
### July 20 (Area 1)

- #247 - Belt Boulevard at 141
- #604 - Carnation & Midlothian
- #607 - Carnation & Warwick
- #813 - Crutchfield at George Wythe High School Track
- #932 - Forest Hill & Bliley
- #978 - Forest Hill & Roanoke
- #1375 - Jahnke & St John's Wood
- #1757 - Midlothian & Erich
- #2112 - Roanoke & Moody
- #2474 - Giant at 110
- #2493 - Midlothian at Overland Transportation

### July 21 (Area 2)

- #303 - Southwood & Clarkson
  - #311 - Broad Rock & Southall
  - #313 - Broad Rock at 3309
  - #761 - Clarkson & Margrave
  - #775 - Commerce & Bells
  - #1273 - Hull & 24th
  - #1320 - Hull & Warwick
  - #1431 - Jefferson Davis & Stockton
  - #1437 - Jefferson Davis & Walmsley
  - #2148 - Ruffin at Ruffin Apartments
- (Area 3 was previously completed)

Transit Accessibility - Landing Pads at GRTC Bus Stops



For detailed stop and route information  
please contact Customer Service at  
**358-GRTC (4782)** or visit us online  
at [ridegrtc.com](http://ridegrtc.com)

